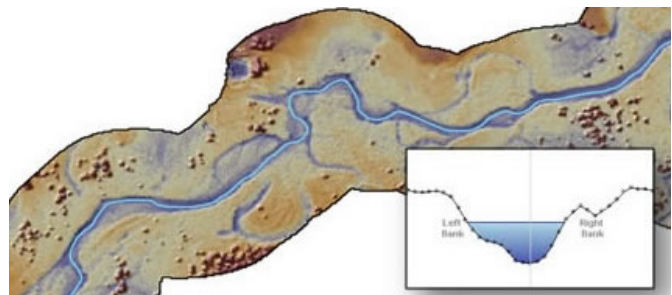
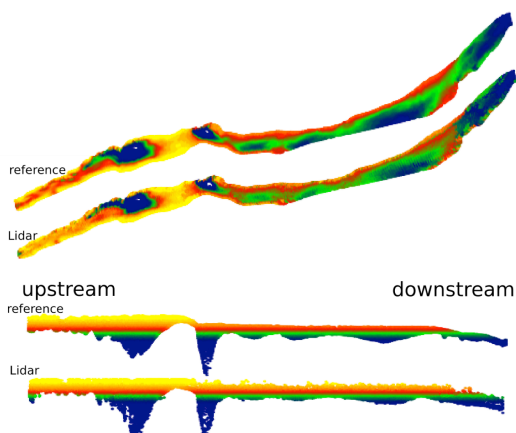


Soil and Water Resources Management
Corso di Laurea Magistrale in Scienze e Tecnologie Agrarie

Jean-Stéphane BAILLY

AgroParisTech
Département SIAFEE, Montpellier, France

LiDAR in riverine and cultivated environments



Mercoledì 20 maggio 2015
ore 09.10 – 11.00

Aula 15 - Cà Gialla

AGRIPOLIS – Viale dell'Università, 16 – 35020 LEGNARO (Padova)

Introduce:
Paolo Tarolli

DAFNAE TESAFA